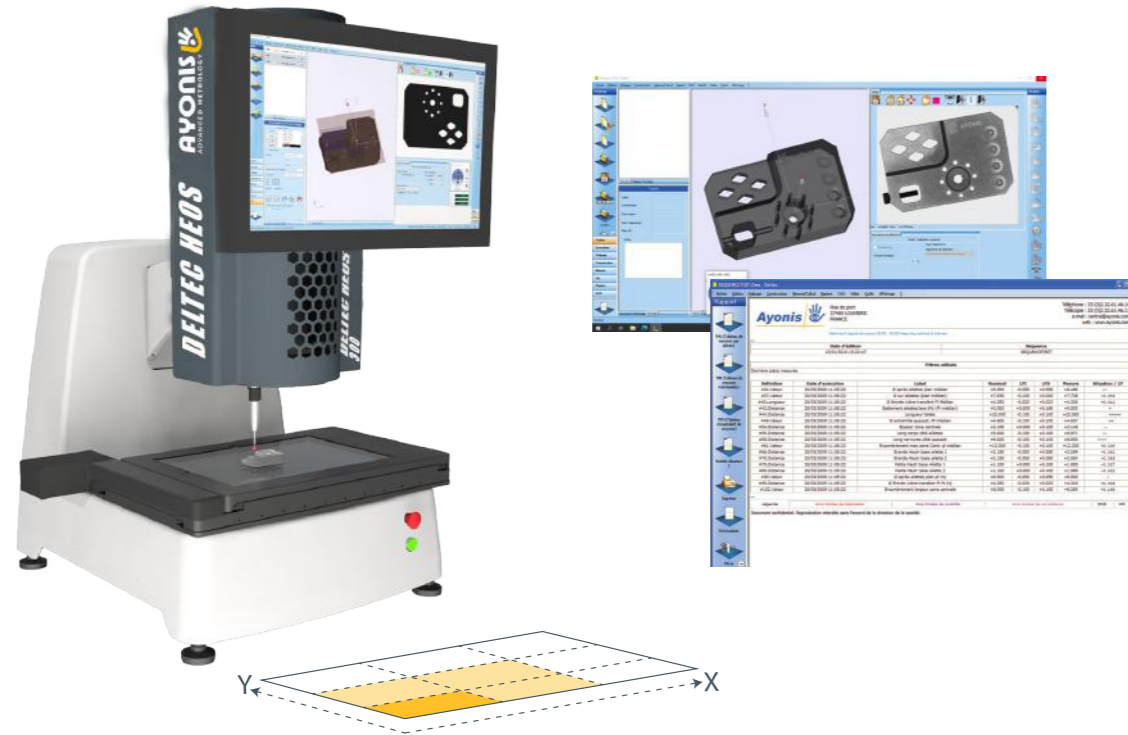


DELTEC Heos

2D/3D hybride digital profile projector

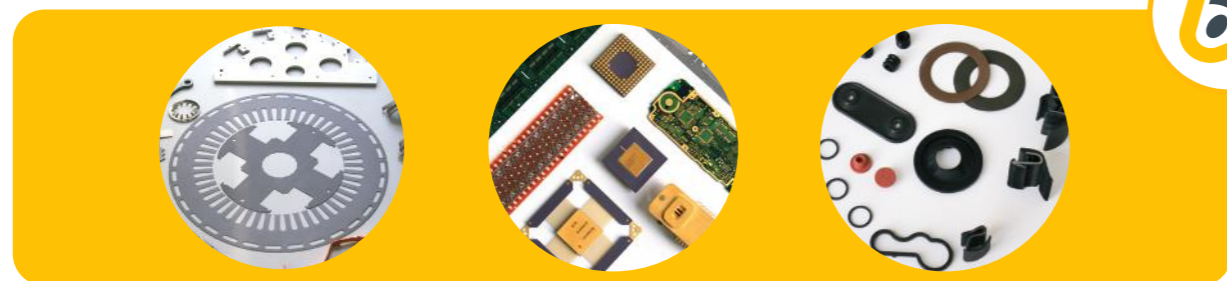


You drop it, you measure it!

Control of parts regardless of their position and orientation in a field of view up to 300x200 mm.

Increased accuracy, reproducibility and objectivity of the measurements while reducing the control time.

Recording and statistical analysis of measurements to optimize traceability and quality control.



Machine structure:

- Structure in cast aluminum alloy
- XY stroke: 150 x 150 or 250 x 150 mm
- Maximum XY measuring capacities: 200 x 200 mm or 300 x 300 mm (zoom 1)
- Load capacity: 10 kg.
- Cross roller guide
- Encoder resolution: 0.1 µm.
- X, Y, Z speed: 100 mm/s max
- Bi-telecentric optics for extremely precise full field measurements.

Measurement ranges:

	Zoom position			
	1	2	3	4
Field of view	67.6 x 56.5mm	33.7 x 28.2mm	16.8 x 14.1mm	8.4 x 7.1mm
«P» uncertainties in the field (2σ)	±5 µm	± 3.0 µm	± 1.9 µm	± 1.1 µm

- XY E2 : from (3.1 + 5 L /1000) µm (vision, zoom n°4)
- XY E2 : (2.5 + 5 L /1000) µm (tactile)
- Z E1 : (2.5 + 5 L /1000) µm (tactile)

Touch probe

- Renishaw ® TP200
- Renishaw ® TP20

Vision:

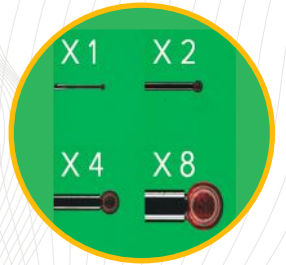
- 5 MPX high definition digital color camera
- Motorized bi-telecentric zoom (4 indexed positions)
- Programmable lighting devices:
 - Episcopic white LED
 - Diascopic collimated LED
 - Optional motorized 3-in-1 lighting device (episcopic, low angle, dark field)
- Magnification x14 to x112 (as an indication in full-field display on 24" screen)

Computer:

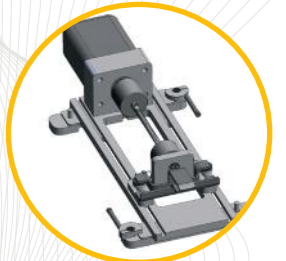
- CPU INTEL Core I5, 8 Go, HDD 250 Go mini
- 24" touch screen
- Windows 10 / 64 bits

DELTEC suite software:

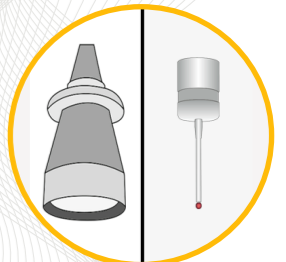
- The DELTEC HEOS machine is provided with the "DELTEC suite™" software, that enables dimensional control :
- 2 sensors (vision + touch) management.
 - Lighting and magnification configurations.
 - 2D/3D gemoetric and mathematics tools library.
 - Storage and automatic results export into a data base.



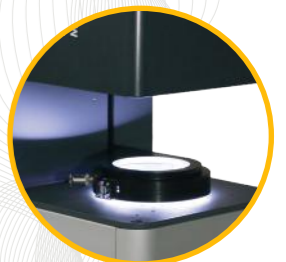
4 magnifications



Rotary axis



Vision + touch



3 in 1 lighting device

Terms of use:

- Power supply: 220 V or 110 V, 50 or 60Hz, 600VA
- Temperature range ensuring accuracy: $\theta_0 \pm 1^\circ\text{C}$ (θ_0 = ambient and calibration temperature, standard temperature $\theta_0 = 20^\circ$)
- Operating temperature: 15 to 35°C